

# ***600-E Series***

## ***Digital Baggage Scales***

### Installation / Setup / Operation Manual

Revision 2.4  
May 14, 2019



© 2019 Triner Scale & Mfg. Co., Inc.

Contents subject to change without notice.

Triner Scale  
8411 Hacks Cross Road  
Olive Branch, MS 38654-4010  
(662) 890-2385  
(800) 238-0152  
Fax (662) 890-2386  
E-mail: [info@trinerscale.com](mailto:info@trinerscale.com)  
Web: [www.trinerscale.com](http://www.trinerscale.com)

# TABLE OF CONTENTS

	<u>Page</u>
Chapter 1: Introduction To The 600E Digital Baggage Scale.....	1-1
Chapter 2: Installation .....	2-1
2.1 Parts List.....	2-1
2.2 Scale Base Installation (Standard Style) .....	2-1
2.3 Scale Base Installation (Full Well Style) .....	2-3
2.4 Scale Base Installation (Low Profile Style) .....	2-4
2.5 Digital Display and Keypad Installation.....	2-5
2.6 Load Cell Connections .....	2-9
2.7 Connecting Serial Printer, Remote Display or Computer .....	2-9
2.8 Connecting the Power Supply .....	2-9
Chapter 3: Configuration .....	3-1
3.1 Configuration Overview .....	3-1
3.2 Setup ("F") Menu .....	3-1
3.2.1 Entering the Setup Menu.....	3-1
3.2.2 Navigating in the Setup Menu .....	3-1
3.2.3 Notes on the Setup Menu.....	3-2
3.2.4 Exiting the Setup Menu .....	3-2
3.3 User ("A") Menu.....	3-3
3.3.1 Entering the User Menu.....	3-3
3.3.2 Navigating in the User Menu .....	3-3
3.3.3 Notes on the User Menu .....	3-4
3.3.4 Exiting the User Menu .....	3-4
Chapter 4: Setup Menu Descriptions and Procedures.....	4-1
4.1 Setup Menu Descriptions .....	4-1
Chapter 5: User Menu Descriptions and Procedures.....	5-1
5.1 User Menu Descriptions .....	5-1
5.2 User Menu Procedures .....	5-2
5.2.1 ID Number Entry (A8).....	5-2
5.2.2 Line Feeds Entry (A9).....	5-2
Chapter 6: Calibration .....	6-1
6.1 Calibration Overview .....	6-1
6.2 Zero Calibration (F16) .....	6-1
6.3 Span Calibration (F17) .....	6-1

6.4	View Calibration Values (F18) .....	6-2
6.5	Key-in Zero Calibration Value (F19) .....	6-2
6.6	Key-in Span Calibration Value (F20) .....	6-3
Chapter 7:	Operation.....	7-1
7.1	Display.....	7-1
7.1.1	Light Emitting Diode (LED) Display .....	7-1
7.2	Remote Keyboard.....	7-1
7.2.1	Function Keys.....	7-2
7.3	General Scale Operation .....	7-2
7.3.1	Weighing an item.....	7-2
7.3.2	Accumulation Function .....	7-2
Appendix A:	Specifications .....	A-1
Appendix B:	Serial Port Information.....	B-1
B.1	Serial Port Modes .....	B-1
B.1.1	Full Duplex Mode.....	B-1
B.1.1.1	Recognized Host Commands .....	B-2
B.1.2	Print Ticket Mode .....	B-2
B.1.3	Simplex Mode.....	B-3
Appendix C:	Determining Proper Span Gain (F2).....	C-1
C.1	Span Gain Overview.....	C-1
C.2	Setting the initial value for span gain .....	C-1
C.3	Viewing the internal counts.....	C-1
Appendix D:	Displayed Error Codes .....	D-1
Appendix E:	Sealing The Control Module .....	E-1

## LIST OF FIGURES

1-1	Standard Style .....	1-1
1-2	Detail View - Standard Style .....	1-2
1-3	Low Profile Style .....	1-3
1-4	Full Well Style .....	1-4
2-1	Bottom Of Scale (Shipping Screw) .....	2-1
2-2	Corner Detail .....	2-2
2-3	System Block Diagram .....	2-2
2-4	Bottom Of Scale (Shipping Screw) .....	2-3
2-5	Corner Detail .....	2-3
2-6	Corner Detail .....	2-4
2-7	Display Cut Out Detail .....	2-5
2-8	Display Cable Detail .....	2-6
2-9	Keypad Cut Out Detail .....	2-7
2-10	Keypad Cable Detail .....	2-8
2-11	Color Codes for Shielded Load Cell Cable .....	2-9
2-12	Pin Assignments for the Load Cell Port .....	2-9
2-13	Pin Assignments for the Summing Card .....	2-9
2-14	Pin Assignments for the DSUB9 serial port connector .....	2-10
3-1	Setup Menu Key Assignments .....	3-2
3-2	Setup Menu Chart .....	3-2
3-3	User Menu Chart .....	3-4
5-1	User Menu Key Assignments .....	5-2
6-1	Setup Menu Key Assignments .....	6-1
7-1	600E LED Display Detail .....	7-1
7-2	Function Keys Layout .....	7-2
B-1	Cable Diagram for Indicator to IBM PC .....	B-1
B-2	Consolidated Controls Demand Mode .....	B-1
B-3	Print Ticket .....	B-2
B-4	Cable Diagram for Indicator to Printer .....	B-2
B-5	Consolidated Controls Continuous Mode .....	B-3
E-1	Control Module Sealing .....	E-1

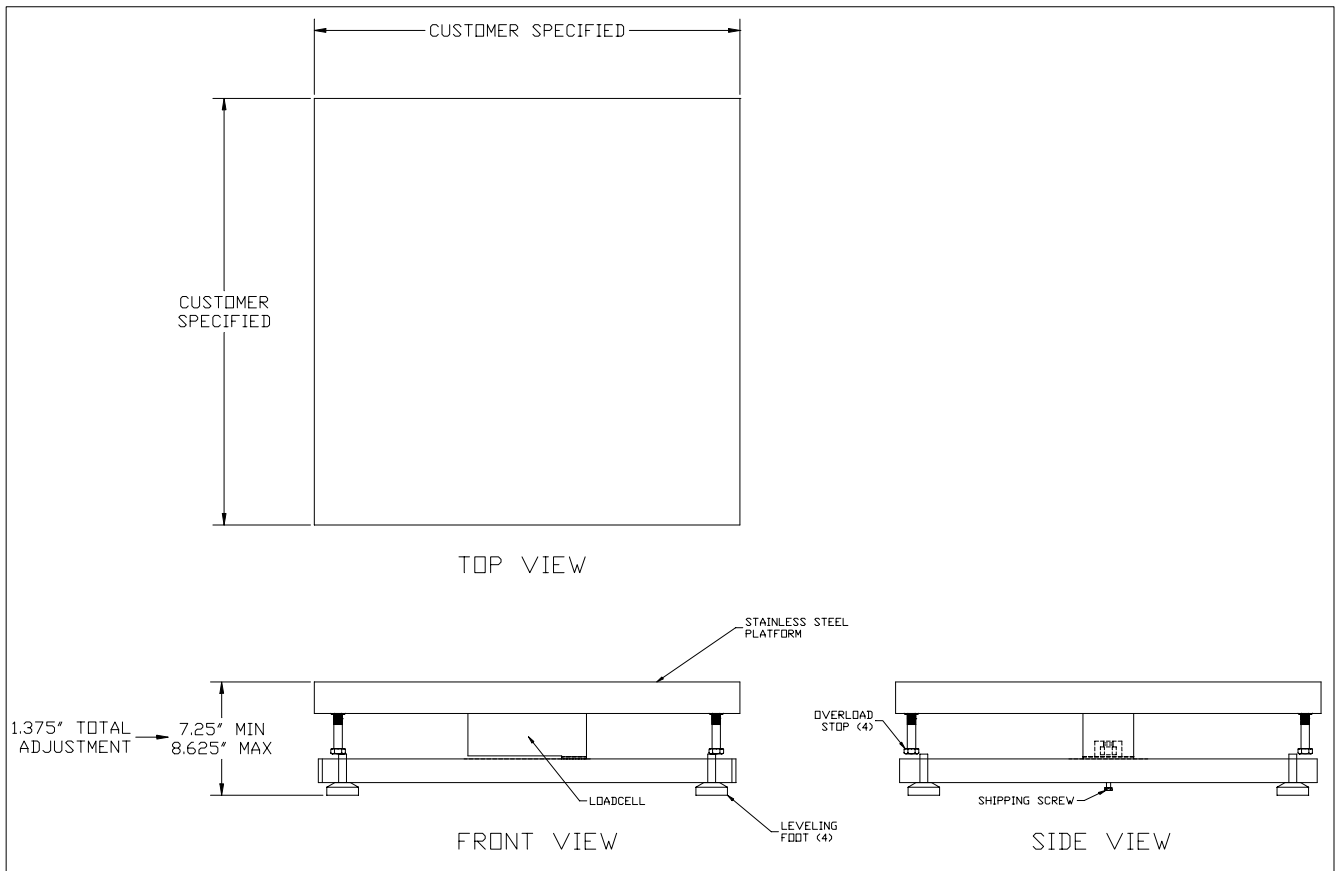
## LIST OF TABLES

2-1	Parts List .....	2-1
6-1	Calibration Value Table .....	6-2
7-1	600E Annunciator Definitions .....	7-2
C-1	Minimum Recommended Span Gain Table .....	C-2

## CHAPTER 1: INTRODUCTION TO THE 600E DIGITAL BAGGAGE SCALE

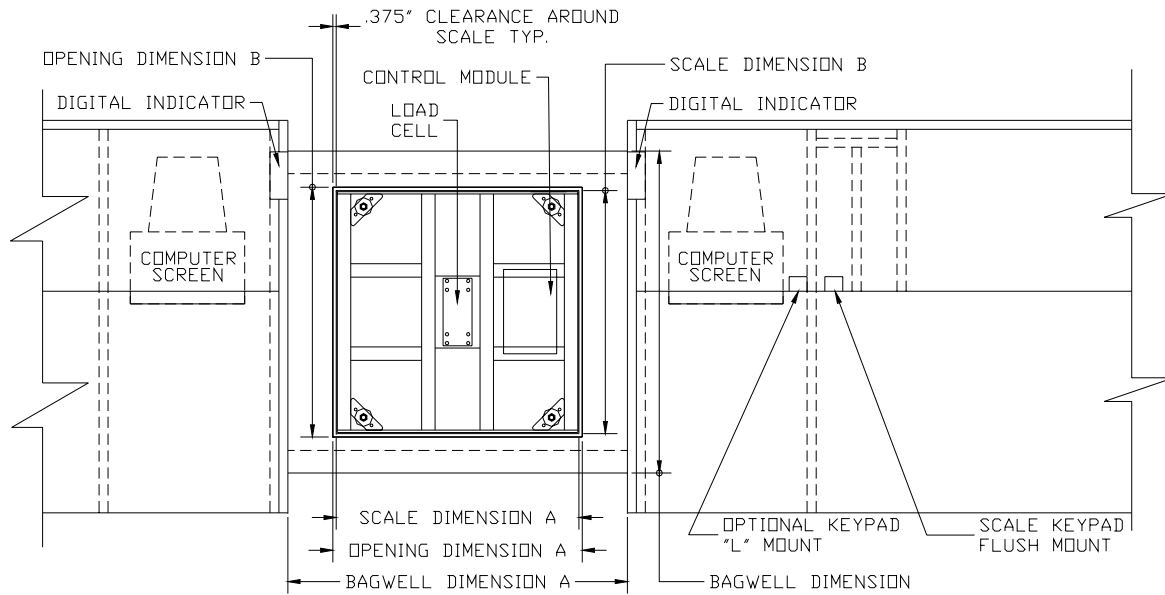
The 600E Series of Digital Baggage Scales are general-purpose scales used to weigh baggage and freight of all sizes. They have dual remote digital displays and keypad. The displays and keypad are designed to be flush panel mounted to provide a stream lined finish.

This manual will cover three different styles, the Standard, Low Profile, and the Full Well versions.



**Fig. 1-1**  
**Standard Style**

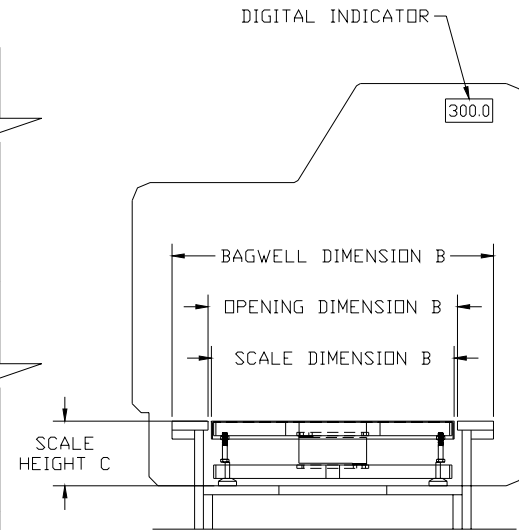
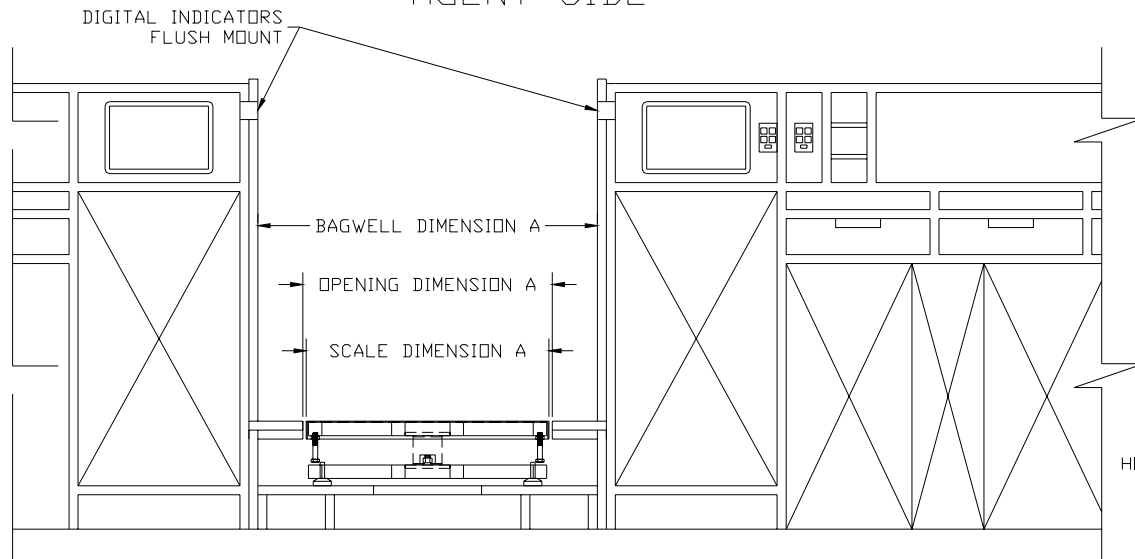
PASSENGER SIDE



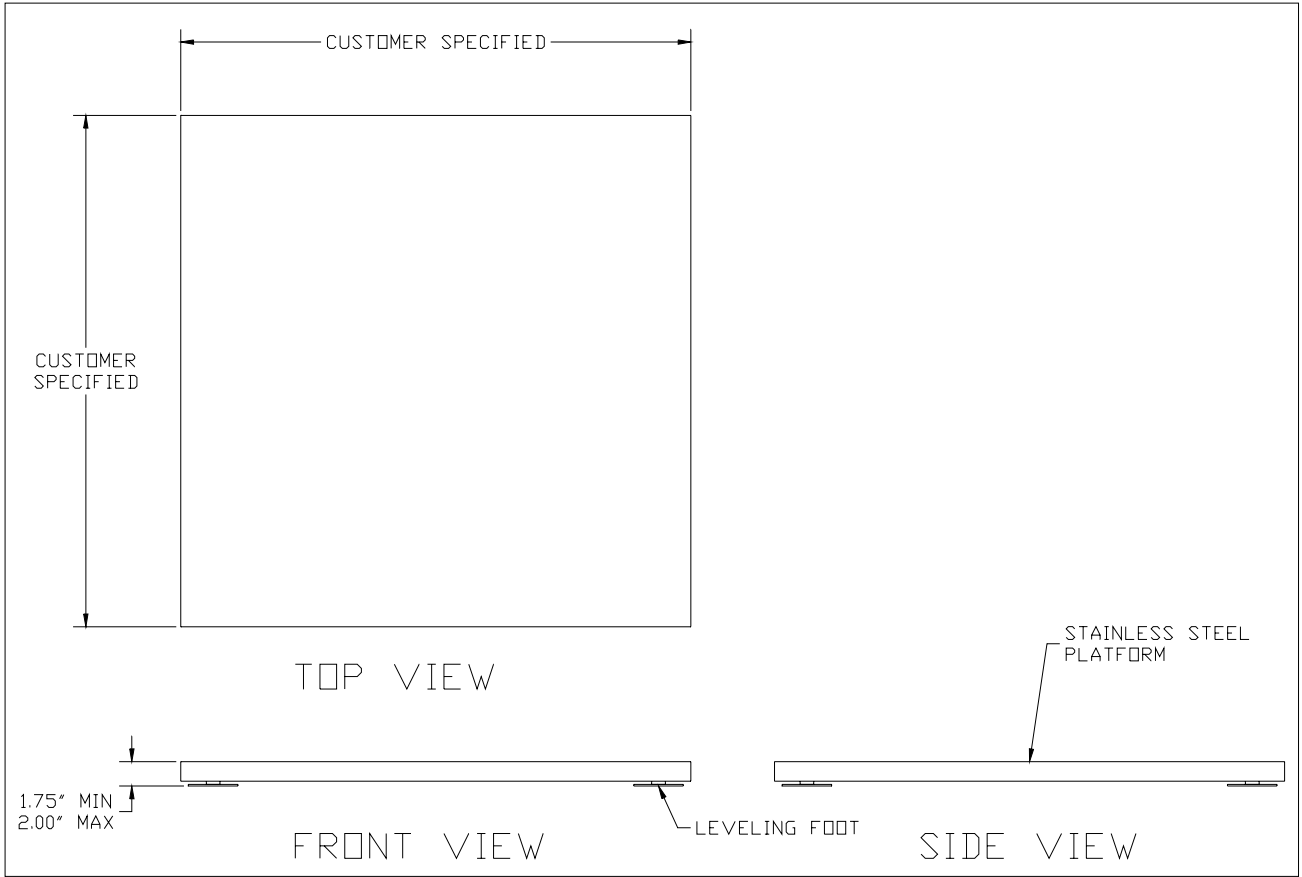
	BAGWELL DIMENSION	OPENING DIMENSION	SCALE DIMENSION
A			
B			
C			7.25" MIN. 8.625" MAX.

APPROVED BY: \_\_\_\_\_

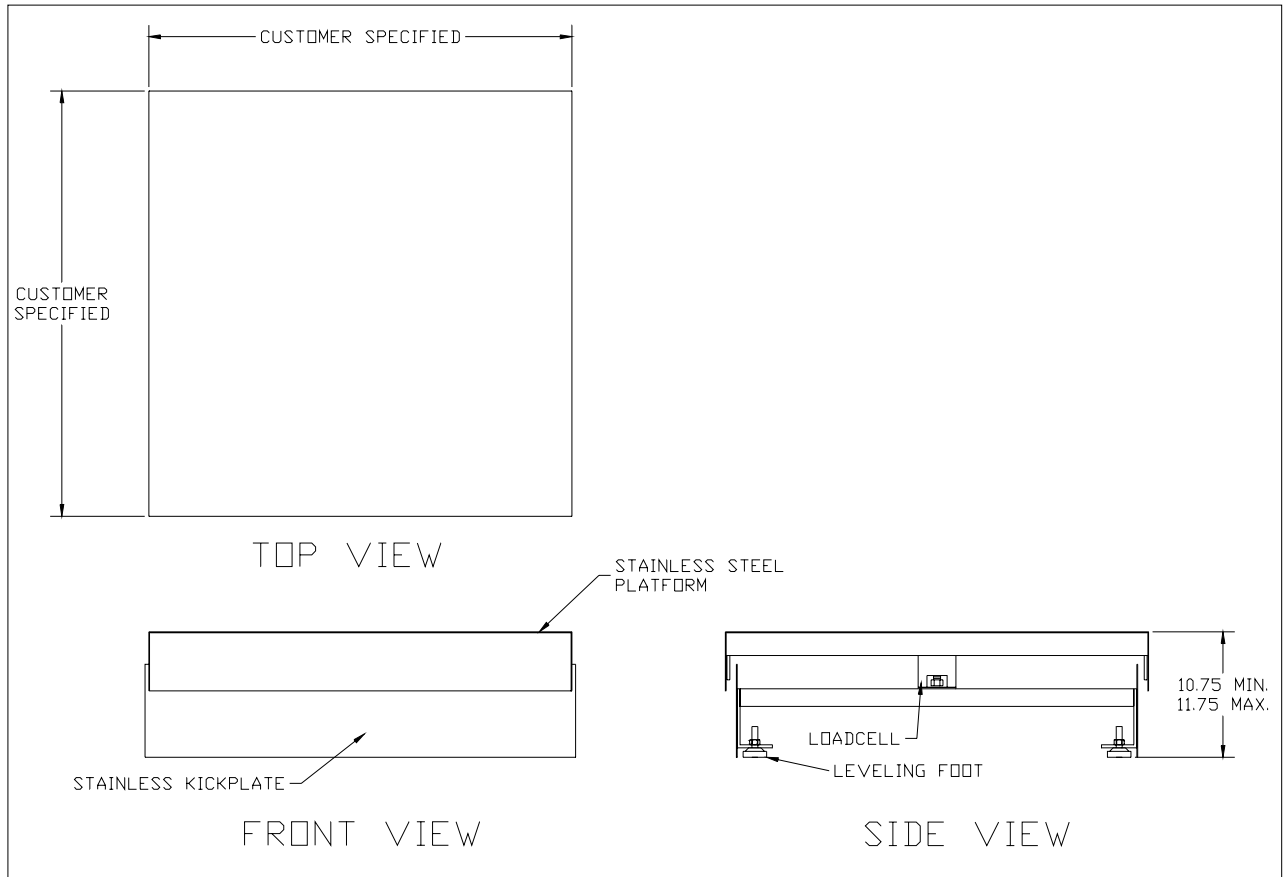
AGENT SIDE



**Fig. 1-2**  
**Detail View - Standard Style**



**Fig. 1-3**  
**Low Profile Style**



**Fig. 1-4**  
**Full Well Style**

## CHAPTER 2: INSTALLATION

### 2.1 PARTS LIST

PART NUMBER	DESCRIPTION	600-E QTY	600-FW QTY	600-ELP QTY
SC105	SCALE BASE	1	1	1
SSCOV	STAINLESS STEEL PLATFORM COVER	1	1	1
SSKICK	STAINLESS STEEL KICKPLATE	N/A	2	N/A
CMOD-1	SCALE CONTROL MODULE	1	1	1
FOOT02	2" DIA. LEVELING FEET WITH LOCKNUTS	4	4	N/A
FOOT03	3" LEVELING FOOT, CUSHION RUBBER MOUNT WITH ¼-20 JAM NUT	N/A	N/A	4
DMOD-1	DIGITAL DISPLAY MODULES	2	2	2
KMOD-1	KEYPAD MODULE	1	1	1
DCBL-1	12' DIGITAL DISPLAY CABLES	2	2	2
KCBL-1	12' KEYPAD CABLE	1	1	1
WGSCR-1	WING SCREWS (LONG)	6	6	6
WGSCR-2	WING SCREWS (SHORT)	6	6	6
WDSCR-1	SCALE ANCHOR WOOD SCREWS (#12 x 4 PHL HD)	8	N/A	N/A
WDSCR-2	SCALE ANCHOR WOOD SCREWS (#8 x 1 PHL HD)	N/A	N/A	12
ABLT-1	¼ X 3" CONCRETE ANCHOR BOLT	N/A	8	N/A
RCBL-1	OPTIONAL DISPLAY RIBBON CABLE ADAPTER WITH GROUND STRAP	2	2	2
RCBL-2	OPTIONAL KEYPAD RIBBON CABLE ADAPTER WITH GROUND STRAP	1	1	1
LBKT	OPTIONAL "L" BRACKET	1	1	1
WDSCR-2	OPTIONAL "L" BRACKET WOOD SCREWS (#8 X 1 PHL HD)	2	2	2
AC004	120-240 VAC INPUT, 12 VDC OUTPUT (800 Ma) AC ADAPTER	1	1	1
PB75KG	PLANAR BEAM LOAD CELL, 75KG	N/A	N/A	4
1250-250KG	SINGLE POINT LOAD CELL, 250KG	1	1	N/A

Table 2-1: Parts List

### 2.2 Scale Base Installation (600-E Standard Style)

1. Remove the stainless steel platform cover by lifting it straight up. Remove the carton of electronics and hardware wedged between the scale structures. Open the carton and verify that all components are present.
2. Tilt the scale base on one of its edges to access the bottom of the scale. Remove the ¼" shipping screw from the bottom of the scale (**see fig. 2-1**). If this screw is not removed the scale **will not operate correctly!**

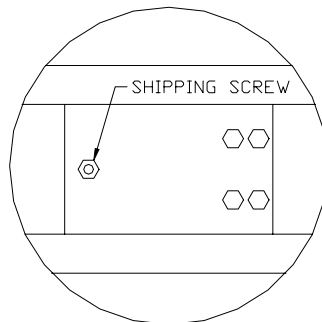
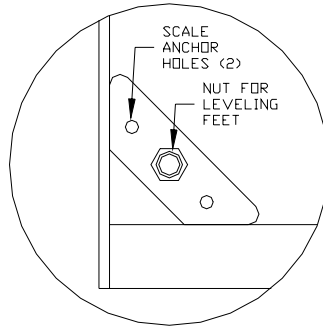


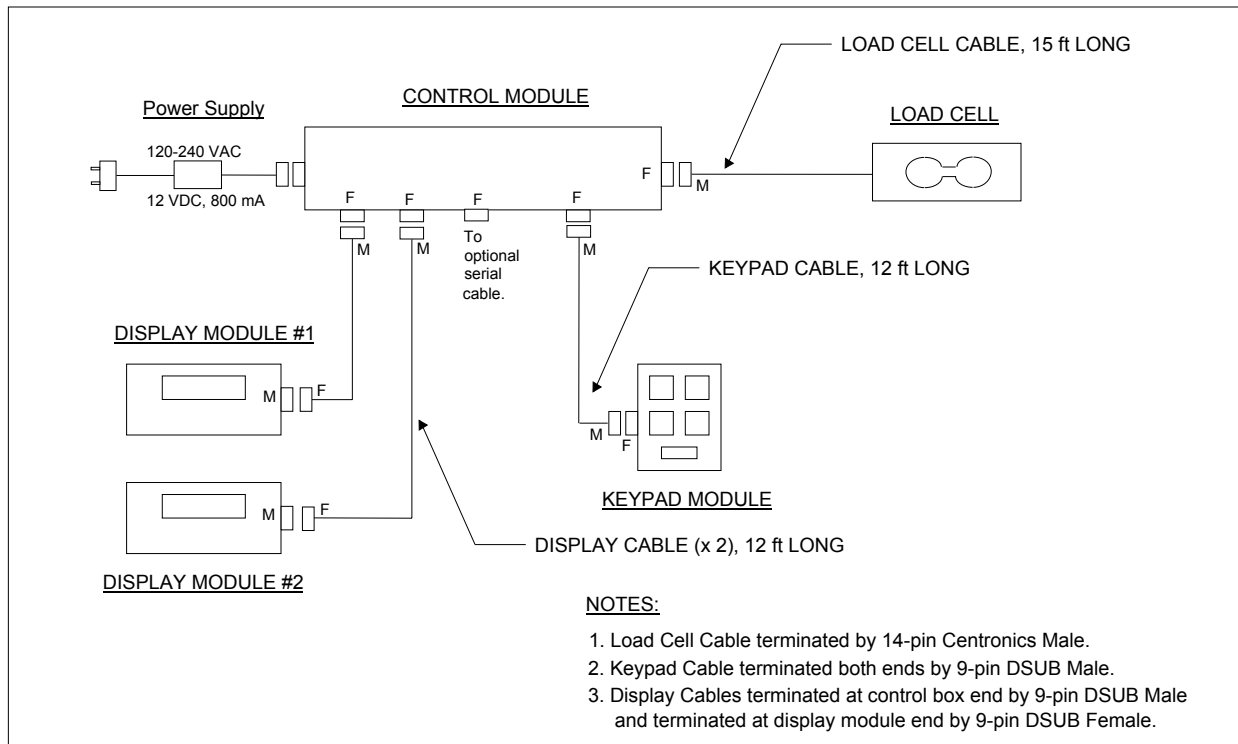
Fig. 2-1: Bottom of Scale (Shipping Screw)

- Remove the locknuts from the four (4) Leveling Feet. Thread the leveling feet all the way into the nuts welded in all four (4) corners of the scale lower frame (**see fig. 2-2**). Once the leveling feet are installed thread the locknuts back onto the top side of the leveling feet (hand tight).



**Fig. 2-2: Corner Detail**

- Before beginning installation into the counter it is recommended to perform an initial check of the scale system. Set the scale base on the floor, level the scale and plug all components into the control module. All the ports on the control module and cables are clearly marked (**see fig. 2-3 for System Block Diagram**). Place stainless steel platter back onto the scale. Turn the scale on with the on/off switch located on the remote keypad.



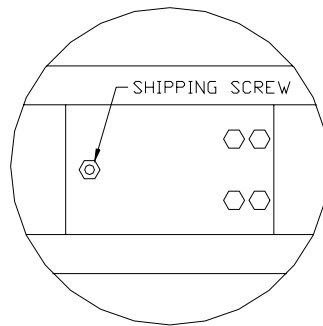
**Fig. 2-3: System Block Diagram**

- Remove the stainless steel top and disconnect all cables from the control module. Place the scale base in the location provided (bag well).

6. Center the frame in the bag well opening. Adjust the leveling legs so that the scale base is approximately  $\frac{1}{2}$ " above the opening and so that the scale is in a level position. Tighten the locknuts on the leveling feet.
7. Use the Scale Anchor Holes at each corner (**see fig. 2-2**) to secure the scale base in place with the eight (8) wood screws provided.
8. **The scale base must be grounded** with the lead attached to the top frame. The center screw on an electrical outlet or a metal conduit is usually suitable. Leave some slack in the wire. Do not pull the wire tight because it can negatively affect weighing performance.

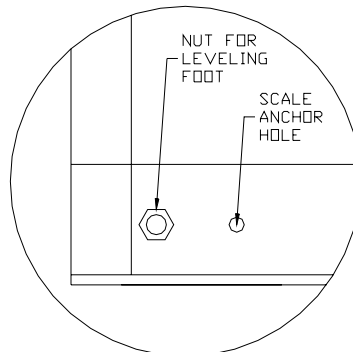
### 2.3 Scale Base Installation (600-E Full Well Style)

1. Remove the stainless steel platform cover by lifting it straight up. Remove the carton of electronics and hardware wedged between the scale structures. Open the carton and verify that all components are present (**see table 2-1**).
2. Tilt the scale base on one of its edges to access the bottom of the scale. Remove the  $\frac{1}{4}$ " shipping screw from the bottom of the scale (**see fig. 2-4**). If this screw is not removed the scale **will not operate correctly**.



**Fig. 2-4: Bottom of Scale (Shipping Screw)**

3. Remove the locknuts from the four (4) Leveling Feet. Thread the leveling feet all the way into the nuts welded in all four (4) corners of the scale lower frame (**see fig. 2-5**). Once the leveling feet are installed thread the locknuts back onto the top side of the leveling feet (hand tight).



**Fig. 2-5: Corner Detail**

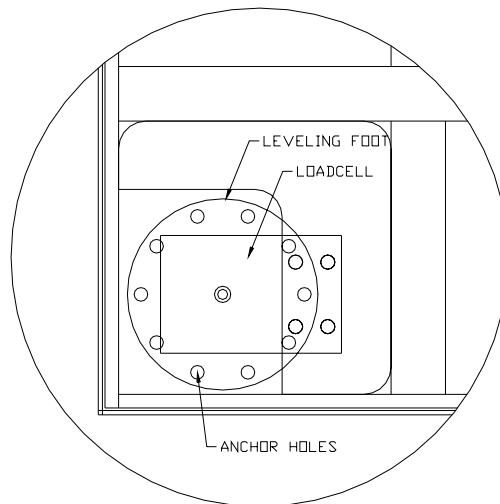
4. Before beginning installation into the counter it is recommended to perform an initial check of the scale system. Set the scale base on the floor, level the scale and plug all components into the control module. All the ports on the control module and cables are

clearly marked (**see fig. 2-3 for System Block Diagram**). Place stainless steel platter back onto the scale. Turn the scale on with the on/off switch located on the remote keypad.

5. Remove the stainless steel top and disconnect all cables from the control module. Place the scale base in the location provided (between ticket counters).
6. Center the frame in the opening. Adjust the leveling legs so that the scale base is in a level position. Tighten the locknuts on the leveling feet.
7. Use the Scale Anchor Holes at each side of the lower frame (**see fig. 2-5**) to secure the scale base in place with the eight (8) anchor bolts provided.
8. Attach the kick plates to the front and rear side of the lower frame. The kick plates attach with Velcro so that they can be easily positioned and compensate for varying height and level conditions.
9. **The scale base must be grounded** with the lead attached to the top frame. The center screw on an electrical outlet or a metal conduit is usually suitable. Leave some slack in the wire. Do not pull the wire tight because it can negatively affect weighing performance.

#### 2.4 Scale Base Installation (600-E Low Profile Style)

1. Remove the stainless steel platform cover by lifting it straight up. Remove the carton(s) of electronics and verify that all components are present (**see table 2-1**).
2. Locate the four (4) Leveling Feet. Remove the 1/4-20 jam nuts. Thread the leveling feet all the way into the threaded load cell holes in all four (4) corners of the scale frame (**see fig. 2-6**).



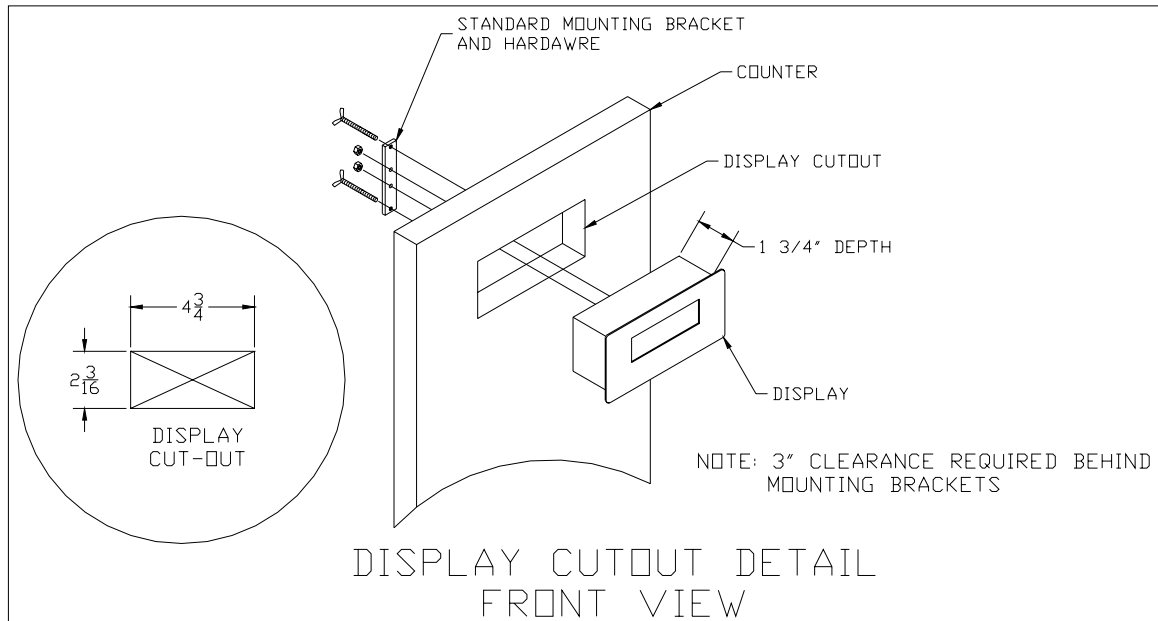
**Fig. 2-6: Corner Detail**

3. Before beginning installation into the counter it is recommended to perform an initial check of the scale system. Set the scale base on the floor, level the scale and plug all components into the control module. All the ports on the control module and cables are clearly marked (**see fig. 2-3 for System Block Diagram**). Place stainless steel platter back onto the scale. Turn the scale on with the on/off switch located on the remote keypad.
4. Remove the stainless steel top and disconnect all cables from the control module.
5. Mount the digital displays and keypad (see section 2.5).
6. Place the control module in the area beneath the scale and connect the display cables, keypad cable and power cable.
7. **The scale base must be grounded** with the lead attached to the top frame. The center screw on an electrical outlet or a metal conduit is usually suitable. Leave some slack in the wire. Do not pull the wire tight because it can negatively affect weighing performance.
8. Place the scale base in the location provided (bag well) and connect the load cell cable. Leave some slack in the wire. Do not pull the wire tight because it can negatively affect weighing performance.
9. Center the frame in the opening. Adjust the leveling legs so that the scale base is in a level position. Make sure there is equal pressure on all four leveling feet. Thread the 1/4-20 jam nuts back onto the leveling leg rod and tighten against the load cell.
10. Use the Scale Anchor Holes on each leveling foot (**see fig. 2-6**) to secure the scale base in place with the wood screws provided.
11. Place stainless steel cover back on the scale and test for accuracy.

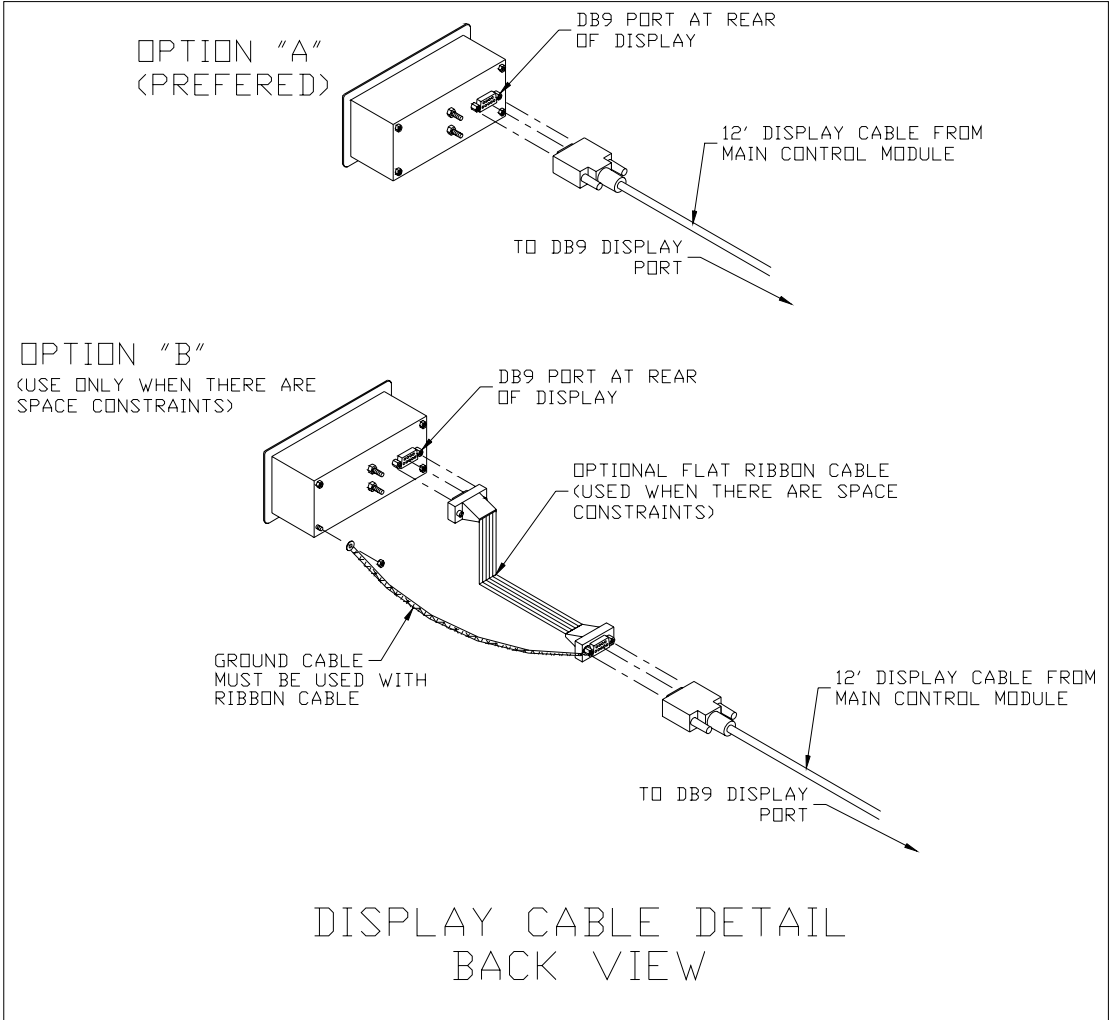
## 2.5 Digital Display and Keypad Installation

1. Refer to **Fig. 2-7** below to cut the holes and mount the dual digital display modules into the counter.

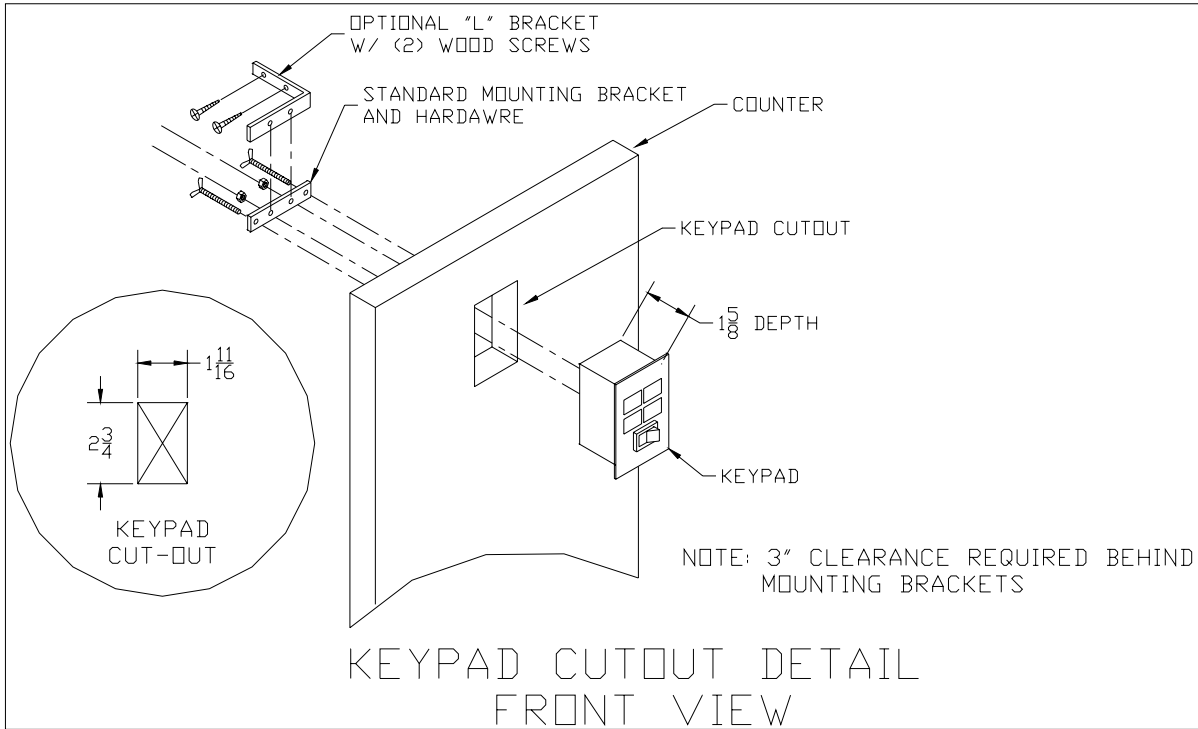
**Note:** Counter cut-outs to be located and cut by the customer or contractor unless otherwise specified.



**Fig. 2-7: Display Cut Out Detail**



**Fig. 2-8: Display Cable Detail**



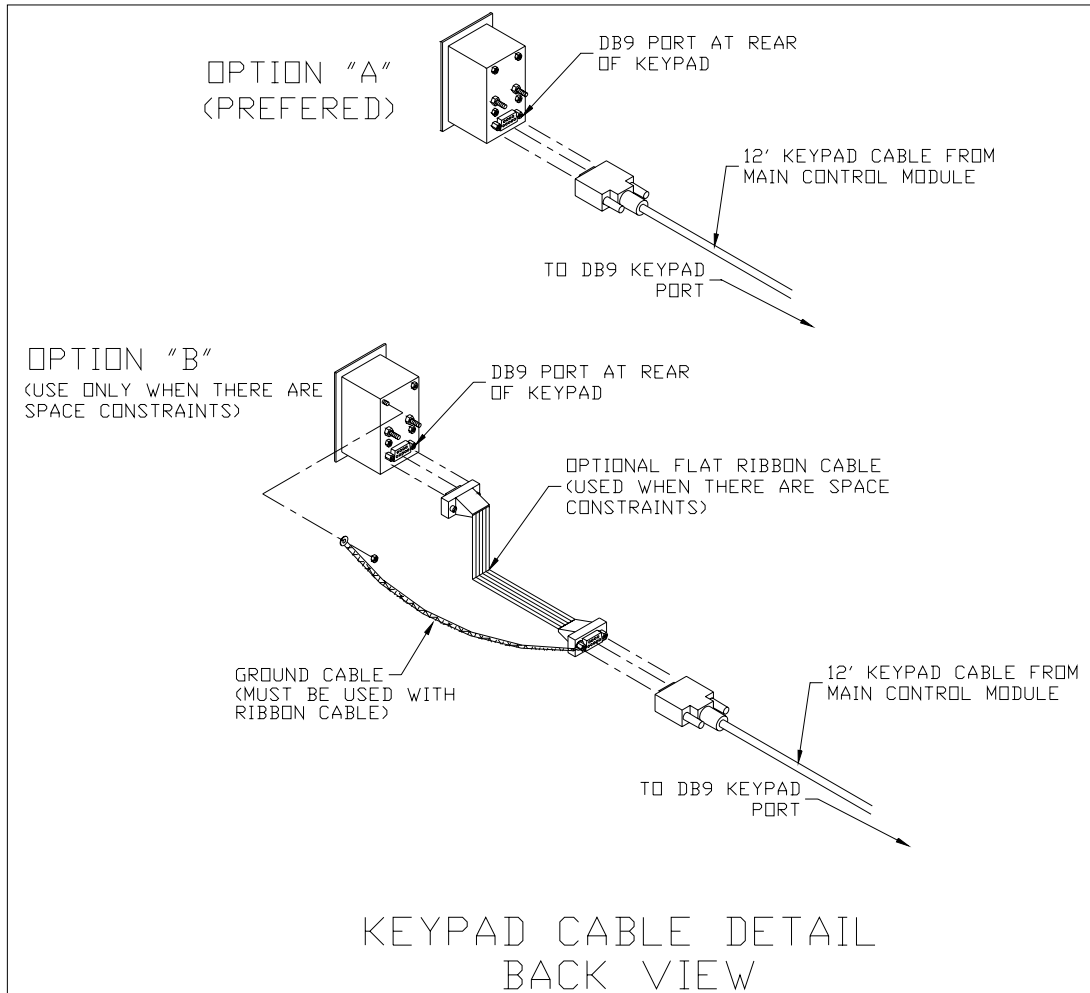
**Fig. 2-9: Keypad Cut Out Detail**

2. Refer to **Fig. 2-9** to cut the holes and mount the keypad module into the counter.

**Note 1:** Counter cut-outs to be located and cut by the customer or contractor unless otherwise specified.

**Note 2:** An optional "L" Bracket is included for installations where the flush panel mount is not convenient. The "L" bracket is used for under/side counter installations.

**Note 3:** Locate the remote switch module so that it is convenient to the ticket agent and not accessible to the passenger.



**Fig. 2-10: Keypad Cable Detail**

3. Connect the display cables from the control module to each remote display (**fig. 2-8**).  
**Note:** Use option "A" unless there are space constraints.
4. Connect the keypad cable from the control module to the keypad module (**fig. 2-10**).  
**Note:** Use option "A" unless there are space constraints.
5. Connect one end of the AC adapter to the control module and the other end into a 120-240 VAC grounded electrical outlet.
6. Once all connections are made, place the stainless cover back on top of the scale.
7. Turn the scale on by using the on/off switch located on the remote switch panel.
8. Test scale for accuracy and proper operation.

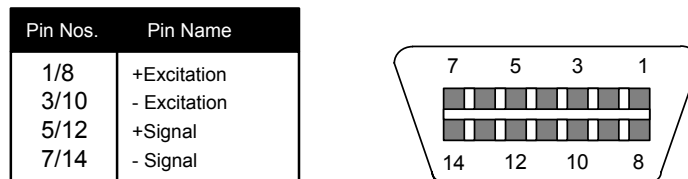
Refer to Chapter 7 on page 7-1 for information on General Scale Operation.

## 2.6 LOADCELL CONNECTIONS

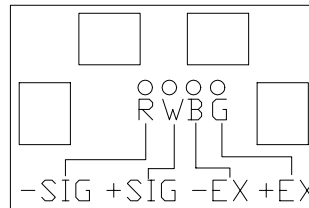
**Note:** The scale system is pre-wired the figures below are for reference only.

Color	Wire Name
RED	+Excitation
BLK	- Excitation
GRN	+Signal
WHT	- Signal

**Figure 2-11: Color Codes for Shielded Load Cell Cable**



**Figure 2-12: Pin assignments for the Load Cell Port**



**Figure 2-13: Pin assignments  
On Summing Card –Low Profile Style Only**

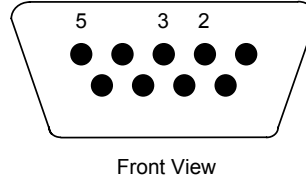
## 2.7 CONNECTING THE SERIAL PRINTER, REMOTE DISPLAY OR COMPUTER

The 600E Digital Baggage Scale comes standard with one full duplex RS-232 serial port, designed for connection to either a PC or a serial printer. The same port may be also used as a simplex, RS-232 port designed for connection to a remote display.

Figure 2-4 shows the serial port pinout. Refer to Appendix B for some suggested cable diagrams. (A 9-pin pin Male D-type connector is required).

1. Plug the serial printer, remote display or computer communication cable (not included) directly into the DSUB9 serial port connector.

Pin No.	Pin Name	Signal Level
2	Receive Data	RS-232
3	Transmit Data	RS-232
5	Signal Ground	RS-232



**Figure 2-14: Pin assignments for the DSUB9 serial port connector**

## 2.8 CONNECTING THE POWER SUPPLY

1. The scale ships standard with an external AC to DC adapter. Simply plug the AC adapter into the control module's DC Power Jack first, and then plug into a standard wall outlet (120-240 VAC). ***Make sure that the AC voltage appearing at the wall outlet matches the input voltages marked on the AC adapter.***

## CHAPTER 3: CONFIGURATION

### 3.1 CONFIGURATION OVERVIEW

**Note:** Your scale has been configured at the factory. **Do not attempt to enter the Setup Menu unless you are a trained scale technician.**

The scale contains two main setup menus: The Setup (“F”) menu which configures the scale to your weigh platform and the User (“A”) menu which configures the serial communication port and enables some user options. The Setup and User menus consist of several menu selections, each with its own sub-menu of choices.

To set up the scale, you must first enter the appropriate menu mode. Once there, four of the remote switch panel keys become directional navigators to move around in the menus, and one key is used to save or SET the selections.

### 3.2 SETUP (“F”) MENU

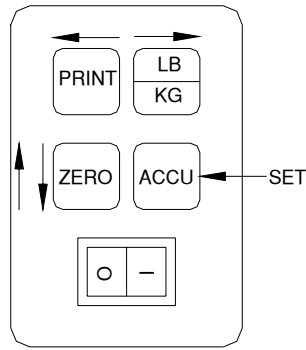
#### 3.2.1 ENTERING THE SETUP MENU

1. Power off the scale by unplugging the power source.
2. On the side of the control box, move the Setup/Calibration Switch to the opposite position.
3. Power on the scale by plugging in the power source. The scale shows ” F 1” to indicate that you are in Setup Menu mode.

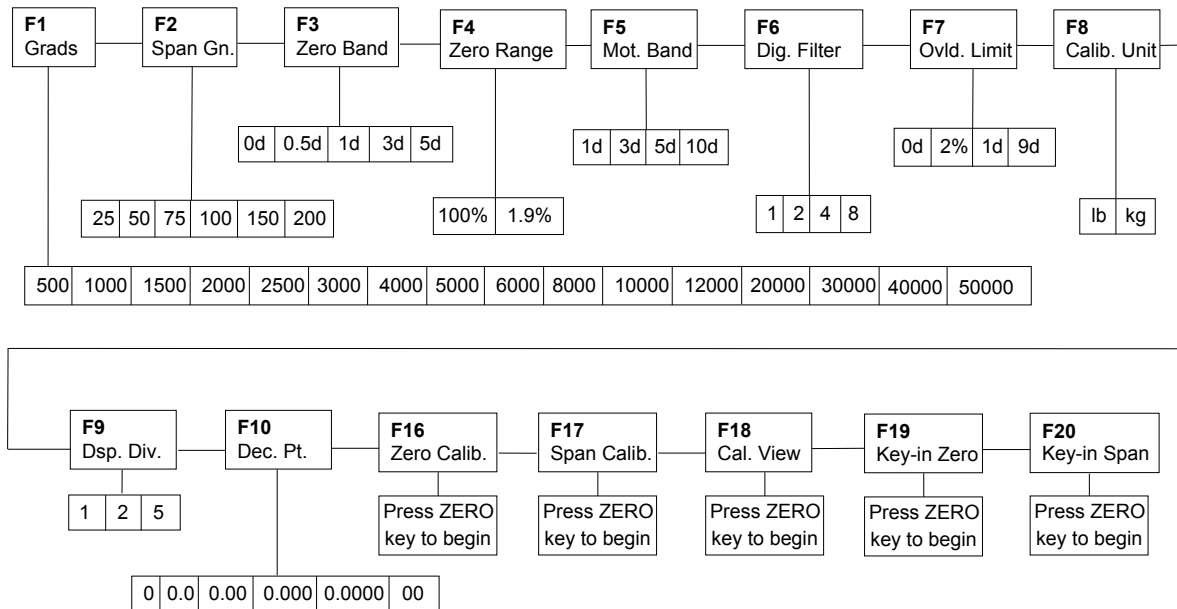
#### 3.2.2 NAVIGATING IN THE SETUP MENU

Use the directional keys shown in Figure 3-1 to move around in the Setup Menu Chart shown in Figure 3-2 on the following page.

1. To move to a new “F” heading, use the PRINT (left) or LB/KG (right) key to move right or left in the Setup Menu Chart.
2. To move to the selection level, press the ZERO (down) key once. The current saved selection is shown.
3. To view the available selections for the current “F” heading, use the PRINT (left) or LB/KG (right) key to move through the selection field.
4. To save a new selection, press the ACCU (Set) key .To exit without saving, press the ZERO (up) key to return to the current “F” heading.
5. Repeat Steps 1 through 4 until the Setup Menu is programmed.



**Figure 3-1: Setup Menu Key Assignments**



**Figure 3-2: Setup Menu Chart**

### 3.2.3 NOTES ON THE SETUP MENU

1. There is an **F21** sub-menu present that is used to set all parameters to factory defaults.
2. Detailed descriptions of the setup menu parameters can be found in Chapter 4 of this manual.
3. The User (“A”) menu sub-menus appear when scrolling left or right from the “F” menu.

### 3.2.4 EXITING THE SETUP MENU

1. Power off the scale by unplugging the power source.
2. On the back cover, move the Setup/Calibration Switch back to its original position.
3. Power on the scale by plugging in the power source. The display will go through a digit check, then settle into Normal Operating mode. All front panel keys will now return to their normal mode of operation.

### 3.3 USER (“A”) MENU

#### 3.3.1 ENTERING THE USER MENU

1. Enter the Setup (“F”) menu by following the directions in Section 3.2.1.
2. Use the right or left directional keys shown in Figure 3-1 to move right or left in the Setup (“F”) menu until the scale shows ” A 1”.

#### 3.3.2 NAVIGATING IN THE USER MENU

Use the directional keys shown in Figure 3-1 to move around in the User Menu Chart shown in Figure 3-3 below.

1. To move to a new “A” heading, use the TARE (left) or PRINT (right) key to move right or left in the User Menu Chart.
2. To move to the selection level, press the ZERO (down) key once. The current saved selection is shown.
3. To view the available selections for the current “A” heading, use the TARE (left) or PRINT (right) key to move through the selection field.
4. To save a new selection, press the NET/GROSS (Set) key .To exit without saving, press the lb/kg (up) key to return to the current “A” heading.
5. Repeat Steps 2 through 5 until the User Menu is programmed.

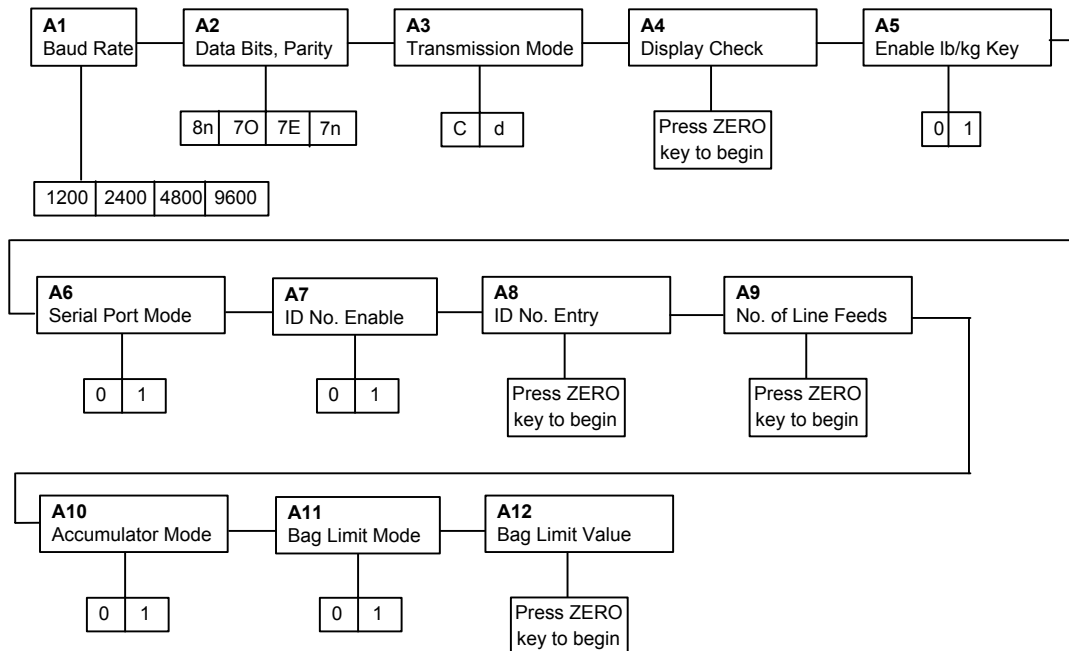


Figure 3-3: User Menu Chart

### **3.3.3 NOTES ON THE USER MENU**

1. Detailed descriptions of the user menu parameters can be found in Chapter 5 of this manual.

### **3.3.4 EXITING THE USER MENU**

1. Exit the User (“A”) menu by following the directions in Section 3.2.4. The display will go through a digit check, then settle into Normal Operating mode. All front panel keys will now return to their normal mode of operation.

## CHAPTER 4: SETUP MENU DESCRIPTIONS AND PROCEDURES

### 4.1 SETUP MENU DESCRIPTIONS

This section provides more detailed descriptions of the selections found in the Setup Menu Chart. Factory-set defaults are shown in bold with a checkmark (✓).

NAME/CODE	DESCRIPTION	CODE/VALUE
<b>F1</b> Graduations	Specifies number of full-scale graduations. Value should be consistent with legal requirements and environmental limits on the useful system resolution.	500 <b>600</b> ✓ 800    1,000 1,500    2,000 2,500    3,000 4,000    5,000 6,000    8,000 10,000    12,000 20,000    30,000 40,000    50,000
<b>F2</b> Span Gain	Span Gain is related to A/D integration time. The larger the span gain, the higher the internal resolution, but the slower the update speed. Note that the scale must be re-calibrated whenever this parameter is altered. See Appendix C for more information.	25 <b>50</b> ✓ 75    100 150    200
<b>F3</b> Zero Track Band	Selects the range within which the scale will automatically zero. Note that the scale must be in standstill to automatically zero. Selections are in Display Divisions.	0d <b>0.5d</b> ✓ 1d 3d 5d
<b>F4</b> Zero Range	Selects the range within which the scale may be zeroed. Note that the indicator must be in standstill to zero the scale.	<b>100%</b> ✓ 1.9%
<b>F5</b> Motion Band	Sets the level at which motion is detected by comparing the present display update with the previous one. If motion is not detected for two seconds or more, scale is in standstill and can process a Print or Zero command. Maximum value varies depending on local regulations.	1d <b>3d</b> ✓ 5d 10d
<b>F6</b> Digital Filter	Averages weight readings to produce higher stability. The higher the filter setting, the greater the stability but the slower the indicator's response time. Choose 8 unless a very fast response is needed.	1    2 4 <b>8</b> ✓
<b>F7</b> Overload Limit	Selects the desired formula which determines the point at which the indicator shows overload. All selections are based on the primary unit selected in F8.  "FS" = Full scale in primary units.	FS <b>FS + 2%</b> ✓ FS + 1d FS + 9d
<b>F8</b> Calib. Unit	Selects the primary base unit to be used in the calibration process. Also the default unit for normal operation. "1" = primary unit is lb.                      "2" = primary unit is in kg.	<b>1</b> ✓ 2

NAME/CODE	DESCRIPTION	CODE/VALUE
<b>F9</b> Display Divisions	Determines the desired weight increments. Value should be consistent with legal requirements.	1 2 5√
<b>F10</b> Decimal Pt.	Determines location of the decimal point.	0 <b>0.0</b> √ 0.00        0.000 0.0000     00
<b>F16</b> Zero Calibration	Places indicator into the zero calibration routine. Scrolling down with the <b>ZERO</b> key one level begins the procedure.	Press <b>ZERO</b> key to begin sequence
<b>F17</b> Span Calibration	Places indicator into the span calibration routine. Scrolling down with the <b>ZERO</b> key one level begins the procedure.	Press <b>ZERO</b> key to begin sequence
<b>F18</b> View Calibration	Actuates the function that allows you to view both the zero and span calibration value. The values displayed in this function are valid only after Calibration (F16 & F17) has been successfully completed. Scrolling down with the <b>ZERO</b> key one level begins the procedure.	Press <b>ZERO</b> key to begin sequence
<b>F19</b> Key-in Zero	Allows you to key-in known zero calibration value in case of memory loss in the field. Scrolling down with the <b>ZERO</b> key one level begins the procedure.	Press <b>ZERO</b> key to begin sequence
<b>F20</b> Key-in Span	Allows you to key-in a known span calibration value in case of memory loss in the field. Scrolling down with the <b>ZERO</b> key one level begins the procedure.	Press <b>ZERO</b> key to begin sequence
<b>F21</b> Factory Reset	This sub-menu will reset all parameters in the "F" and "A" menu to the default settings. USE WITH CAUTION!	Press the <b>ZERO</b> key twice to execute.

## CHAPTER 5: USER MENU DESCRIPTIONS AND PROCEDURES

### 5.1 USER MENU DESCRIPTIONS

This section provides more detailed descriptions of the selections found in the User Menu Chart. Factory-set defaults are shown in bold with a checkmark (✓).

NAME/CODE	DESCRIPTION	CODE/VALUE
<b>A1</b> Baud Rate	Selects the baud rate for data transmission through the serial port.	1200 <b>2400</b> ✓ 4800    9600
<b>A2</b> Data Bits and Parity	Selects the number of data bits and parity of serial transmission. "8n" = 8 data bits with no parity bit and one stop bit "7O" = 7 data bits with odd parity bit and one stop bit "7E" = 7 data bits with even parity bit and one stop bit "7n" = 7 data bits with no parity bit and two stop bits	<b>8n</b> ✓ 7O 7E 7n
<b>A3</b> Mode of Serial Transmission	Selects when data will be sent out of the serial port to a printer or computer: "C" = Continuous mode; send data continuously "d" = Demand mode; send data when a PRINT command is issued from the printer, computer, or indicator.	<b>C</b> ✓ d
<b>A4</b> Display Check	Actuates the function that illuminates all digit segments, decimal points, and LCD annunciators in a test sequence. Pressing the <b>ZERO</b> key to scroll down one level begins the test sequence.	Press <b>ZERO</b> key to begin sequence
<b>A5</b> Disable the lb/kg Key	Allows the lb/kg key to be disabled so that an operator cannot accidentally press the key and change the displayed units. "0" = Disable the lb/kg key      "1" = Enable the lb/kg key	0 <b>1</b> ✓
<b>A6</b> Serial Port Mode	Selects the mode of the RS-232 serial port: Refer to Appendix B for more information. "0" = Full Duplex Mode "1" = Print Ticket Mode	<b>0</b> ✓ 1
<b>A7</b> ID No. Enable	Allows the ID number to be disabled in the Print Ticket mode. Valid only when <b>A6</b> is set to "1". "0" = Disable the ID No.      "1" = Enable the ID No.	<b>0</b> ✓ 1
<b>A8</b> ID No. Entry	Actuates the function that allows entry of a new ID No. Valid only when <b>A6</b> is set to "1". Pressing the <b>ZERO</b> key to scroll down one level begins the sequence.	0 - 199999 (500) 0 - 999999 (500E) <b>123456</b> ✓
<b>A9</b> No. of Line Feeds	Actuates the function that allows entry of the desired number of line feeds to be printed in Print Ticket Mode. Valid only when <b>A6</b> is set to "1". Pressing the <b>ZERO</b> key to scroll down one level begins the sequence.	0 - 99 <b>0</b> ✓
<b>A10</b> Accumulator Mode Enable	Allows the accumulator function to be enabled or disabled. 0 = Disable Accumulator      1 = Enable Accumulator	0 <b>1</b> ✓
<b>A11</b> Bag Limit Mode Enable	Allows the bag limit function to be enabled or disabled. 0 = Disable Bag Limit Function    1 = Enable Bag Limit Function	<b>0</b> ✓ 1

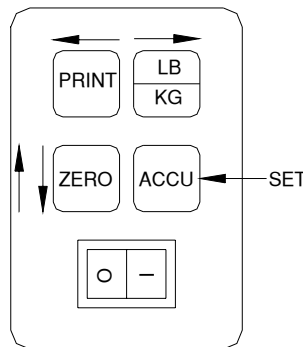
<b>A12</b> Bag Limit Threshold	Actuates a function that allows entry of the Bag Limit Threshold in pounds. To change the threshold use the "Print" or "Lb/Kg" key to move the flashing digit left or right. Use the "Zero" key to increment the digit. Use the "Accu" key to set the desired value.	<b>70√</b>
-----------------------------------	--	------------

## 5.2 USER MENU PROCEDURES

This section provides instructions for all of the User Menu procedures.

### 5.2.1 ID Number Entry (A8)

1. While in the User Menu mode, scroll to "**A 8**", then scroll down once using the ZERO key to enter the ID Number menu.
2. The display will momentarily show "**ID NO**", followed by a value with one flashing digit. This value will be the current ID number value.
3. Use the four directional keys (shown in Figure 5-1 below) to adjust the displayed value to the actual ID Number value. Increase the flashing digit by pressing the ZERO key. Pressing the PRINT key or the Lb/Kg key will change the position of the flashing digit.



**Figure 5-1: User Menu Key Assignments**

4. After setting the exact value, press the ACCU key to save the ID Number value. The display will show "**SET**" momentarily, then revert back up to A8.

### 5.2.2 LF (Line Feeds) Number Entry (A9)

1. While in the User Menu mode, scroll to "**A 9**", then scroll down once using the ZERO key to enter the Line Feeds menu.
2. The display will momentarily show "**LF**", followed by the current line feeds value.
3. Use the four directional keys (shown in Figure 5-1 above) to adjust the displayed value to the actual line feeds value. Increase the flashing digit by pressing the ZERO key. Pressing the PRINT key or the Lb/Kg key will change the position of the flashing digit.
4. After setting the exact value, press the ACCU key to save the line feeds value. The display will show "**SET**" momentarily, then revert back up to A9.

## CHAPTER 6: CALIBRATION

### 6.1 CALIBRATION OVERVIEW

The scale is calibrated by following the procedures embedded in F16 (Zero) and F17 (Span) of the Setup Menu. Each procedure enters a value into the scale's non-volatile memory - F16 the zero value (deadweight) and F17 the span value (test weight). The minimum test weight that can be used is 1% of full-scale capacity. After the two calibration procedures are executed successfully, you should record both calibration values in Table 6-1 using the F18 View procedure.

In the unlikely event that either value is lost while in the field, the setup menu makes provisions for re-entering these values via F19 and F20, thus eliminating the need for re-calibration with test weights.

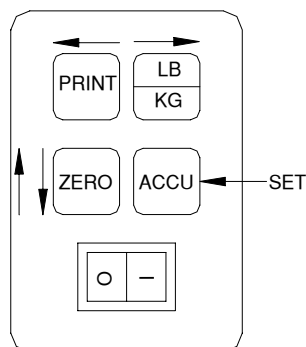
**NOTE:** This chapter assumes that the scale is in Setup ("F") Menu mode. If the scale is not in Setup Menu mode, refer to Chapter 3 for instructions.

### 6.2 ZERO CALIBRATION (F16)

1. While in the Setup mode, scroll to "F 16", then scroll down once using the ZERO key to enter zero calibration menu. The display will momentarily show "C 0" followed by a value. This value is the internal A/D count and can prove useful when trying to troubleshoot setup problems.
2. After making sure that there are no test weights on the platform, press the ZERO key again to zero out the displayed value.
3. Press the ACCU key to save the zero point value. The display will show "EndC0" momentarily, then revert back up to F16. At this time, proceed to the F17 span calibration to complete scale calibration.

### 6.3 SPAN CALIBRATION (F17)

1. While in the Setup mode, scroll to "F 17", then scroll down once using the ZERO key to enter span calibration menu.
2. The display will momentarily show "C 1" for the span calibration, followed by a value with one flashing digit. This value will be zero with the Decimal Point parameter selected in F10. Place the test weight on the weighing platform.
3. Use the directional keys (shown in Figure 6-1 below) to adjust the displayed value to the actual test weight value. Increase the flashing digit by pressing the ZERO key. Pressing the PRINT key or the LB/KG key will change the position of the flashing digit.



**Figure 6-1: Setup Menu Key Assignments**

4. After setting the exact value, press the ACCU key to save the value.
5. If the calibration was successful, the display will show "**EndC1**" momentarily, then revert back up to F17. At this time it is suggested that the calibration values be recorded for future use (see Section 6.4).
6. If the calibration was *not* successful, one of the error messages below will appear. Take the indicated action to correct the problem, then perform a new calibration.

"**Err0**" - The calibration test weight or the adjusted keyed-in weight is larger than the full capacity of the scale. Change the calibration test weight or check the input data.

"**Err1**" - The calibration test weight or the adjusted keyed-in weight is smaller than 1% of the full capacity of the scale. Change the calibration test weight or check the input data.

"**Err2**" - The internal resolution of the scale is not high enough to accept the calibration value. Select a larger parameter for the Span Gain (F2). SEE APPENDIX C FOR MORE INFORMATION.

#### 6.4 VIEW CALIBRATION VALUES (F18)

**Note:** The values displayed in this procedure are valid only after a successful calibration has been performed using F16 and F17.

1. While in the Setup mode, scroll to "**F 18**", then scroll down once using the ZERO key to enter View calibration menu.
2. The display will momentarily show "**CAL 0**" followed by a value. This value is the **zero calibration value** and should be recorded in the table below. Press any key to continue.
3. The display will momentarily show "**CAL 1**" followed by another value. This value is the **span calibration value** and should also be recorded in the table below. Press any key to return to upper level (F18).

SCALE	ZERO CALIBRATION VALUE	SPAN CALIBRATION VALUE
S/N:		

**Table 6-1: Calibration Value Table**

#### 6.5 KEY-IN ZERO CALIBRATION VALUE (F19)

**Note:** This procedure is intended for emergency use only in the case of non-volatile memory loss. A valid zero calibration value, obtained from a successful F16 calibration procedure, must be used.

1. While in the Setup mode, scroll to "**F 19**", then scroll down once using the ZERO key.
2. The display will momentarily show "**CAL 0**", followed by a flashing zero. Use the directional keys (shown in Figure 6-1) to adjust the displayed value to the zero calibration value.
3. After setting the exact value, press the ACCU key to save the value.
4. The display will show "**E CAL 0**" momentarily, then revert back up to F19.

## 6.6 KEY-IN SPAN CALIBRATION VALUE (F20)

**Note:** This procedure is intended for emergency use only in the case of non-volatile memory loss. A valid span calibration value, obtained from a successful F17 calibration procedure, must be used.

1. While in the Setup mode, scroll to "**F 20**", then scroll down once using the ZERO key.
2. The display will momentarily show "**CAL 1**", followed by a flashing zero. Use the directional keys (shown in Figure 6-1) to adjust the displayed value to the span calibration value.
3. After setting the exact value, press the ACCU key to save the value.
4. If the entered value is greater than zero, the display will show "**E CAL 1**" momentarily, then revert back up to F20. If a value of zero is entered, the display will briefly show "**Err 5**", then revert back to the screen described above in Step # 2.

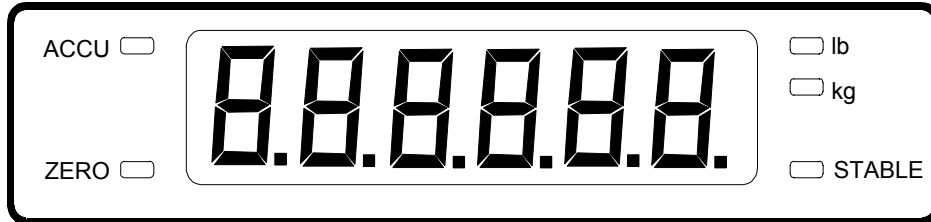
## CHAPTER 7: OPERATION

### 7.1 DISPLAY

The Model 600E indicator utilizes a 6-digit LED (Light Emitting Diode) to display weight and system information.

#### 7.1.1 LIGHT EMITTING DIODE (LED) DISPLAY

Figure 7-1 shows the display detail of the 600E LED display.



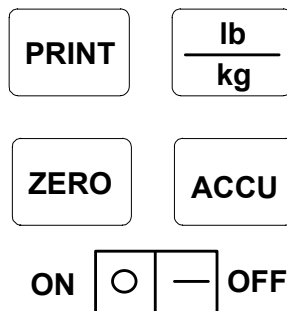
**FIGURE 7-1: 600E LED Display Detail**

LED Annunciator	MEANING
ZERO	Better known as the "Center of Zero" annunciator, this light is active whenever the displayed weight is within $\pm 0.25$ divisions of true zero.
ACCU	Indicates that there is an accumulated weight in memory.
lb, kg	Indicates the unit of the displayed weight.
STABLE	This light is on whenever the scale is stable.

**TABLE 7-1: 600E Annunciator Definitions**

### 7.2 REMOTE KEYBOARD

The keyboard is composed of four function keys and an on/off switch. Refer to Figure 7-2 for the overall layout and key locations.



**FIGURE 7-2: Function Keys Layout**

### 7.2.1 FUNCTION KEYS

**lb/kg** – This key toggles the indicator between lb and kg units if enabled in the User (“A”) Menu. See Chapter 5 for more information.

**Zero** - This key sets the indicator to display zero and resets the bag accumulator provided the following conditions are met:

1. The displayed weight is within the zero reset range that is programmed in F4 of the Setup (“F”) Menu.
2. The scale is not in motion.
3. The scale is not in overload (see Appendix D for error codes).

**Print** - This key is used to send weight information out to the serial port provided the following conditions are met:

1. The scale is not in motion.
2. The scale is not in overload (see Appendix D for error codes).

**ACCU** – This key is used to accumulate the weight of multiple bags and display the total.

## 7.3 GENERAL SCALE OPERATION

### 7.3.1 WEIGHING AN ITEM

1. Select the desired weighing unit by pressing the lb/kg key until that unit is indicated on the display.
2. If necessary, press the ZERO key to obtain a weight reading of zero.
3. Place the object to be weighed on the scale’s platter and allow the weight indication to stabilize. If the item weight exceeds the scale’s weight capacity, it displays “□□□□□□”.
4. Read the weight shown on the display.

### 7.3.2 ACCUMULATION FUNCTION

1. Make sure scale is on zero. Press zero key if needed
2. Place 1<sup>st</sup> bag on the scale. The displays show the weight of the bag.
3. Press the ACCU button.
4. Remove 1<sup>st</sup> bag. Scale returns to Zero.
5. Place 2<sup>nd</sup> bag on scale. The weight of the 2<sup>nd</sup> bag will be displayed.
6. Press the ACCU button and the accumulated weight of both bags is displayed. (the ACCU LED should also light up when accumulated weight is being displayed.) Follow steps 4,5, and 6 for any additional bags.
7. When the last bag is weighed and the accumulated weight is recorded, empty the scale and press the “zero” key to clear accumulations.

## **APPENDIX A: SPECIFICATIONS**

### **ANALOG SPECIFICATIONS**

Full Scale Input Signal	30mV, including dead load
Minimum Sensitivity - Non H-44	0.4 $\mu$ V / grad
Minimum Sensitivity - H-44	1.0 $\mu$ V / grad
Input Impedance	30M $\Omega$ , typical
Internal Resolution	Approximately 260,000 counts
Display Resolution	50,000 display division max
Measurement Rate	10 Meas/sec, nominal
System Linearity	Within 0.02% of FS
Calibration Method	Software Calibration, with long term storage in EEPROM
Excitation Voltage	+10VDC, 4 x 350 $\Omega$ load cells

### **DIGITAL SPECIFICATIONS**

Microcomputer	Intel 80C32
	Program Memory: 32K x 8, external to $\mu$ C
	EEPROM: 64 x 16, external to $\mu$ C
Digital Filtering	Software selectable

### **SERIAL COMMUNICATIONS**

Serial Port	Full Duplex, 1200, 2400, 4800, 9600 Baud
	8 data bits, no parity, 1 stop bit
	7 data bits, odd parity, 1 stop bit
	7 data bits, even parity, 1 stop bit
	7 data bits, no parity, 2 stop bits

### **OPERATOR INTERFACE**

Display	0.56" (14 mm) 7-segment, Led, 6 Digit
Additional Symbols	Stable, Tare, lb, kg, Zero, Accu
Keyboard	4-key flat membrane panel

### **POWER**

AC Adapter	12 VDC @ 800mA
DC Power Consumption - TI-500E	300mA + 30mA/350 $\Omega$ Load Cell

### **ENVIRONMENTAL**

Operating Temperature	-10° to +40° C
Storage Temperature	-25° to +70° C

## APPENDIX B: SERIAL PORT INFORMATION

### B.1 SERIAL PORT MODES

#### B.1.1 FULL DUPLEX MODE

The Full Duplex Mode provides a Demand serial transmission mode and is selected by setting A3 to "d" and A6 to "0". The Demand mode allows control from a host device, usually a PC, and can be activated by pressing the PRINT key on the keypad. Figure B-1 shows a suggested cable diagram for interface to a PC. Figure B-2 shows the serial data format for the Demand Mode.

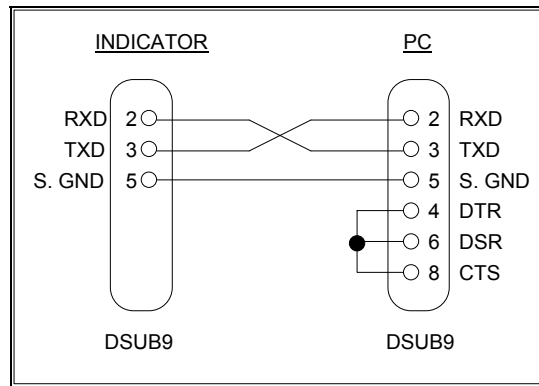


FIGURE B-1. Cable Diagram for Indicator to IBM PC

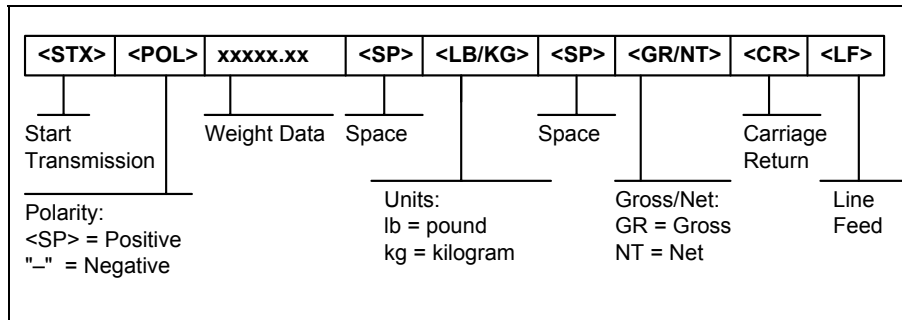


FIGURE B-2. Consolidated Controls Demand Mode

### B.1.1.1 RECOGNIZED HOST COMMANDS

- “**P**” - This command is sent to the indicator to print the indicated display. The indicator will not respond if the scale is in motion, positive overload or negative overload.
- “**Z**” - This command is sent to the indicator to zero the scale. The indicator will not respond if the scale is in motion, positive overload or negative overload. The indicator will also not respond if it is not in gross mode or within the zero range specified in F4 of the Setup Menu.
- “**T**” - This command is sent to the indicator to tare the scale. The indicator will not respond if the scale is in motion, positive overload or negative overload. The indicator will also not respond if it is displaying a negative gross value.
- “**G**” - This command is sent to the indicator to revert to gross mode. The indicator will not respond if the scale is in motion, positive overload or negative overload. The indicator will also not respond if it is not in net mode.
- “**N**” - This command is sent to the indicator to revert to net. The indicator will not respond if the scale is in motion, positive overload or negative overload. The indicator will also not respond if it is not in gross mode or a tare has yet to be established.
- “**C**” - This command is sent to the indicator to toggle among the configured units.

### B.1.2 PRINT TICKET MODE

The Print Ticket Mode is designed specifically for a serial printer and is selected by setting A6 to “1”. Figure B-3 shows the fixed format of the print ticket.

For printers with limited buffers, this mode supports DTR pin handshaking. The DTR pin from the serial printer is wired to the indicator’s RXD pin which then functions as a CTS pin. Figure B-4 shows a suggested cable diagram for interfacing to a serial printer. Refer to the printer’s user manual to confirm which pin is the DTR pin.

#### NOTES:

1. The TARE and NET fields are not printed unless a tare has been established in the system.
2. The ID number field is not printed if it is disabled in A7 of the User Menu.

ID. NO.	123456
GROSS	25.00 LB
TARE	1.48 LB
NET	23.52 LB

FIGURE B-3. Print Ticket

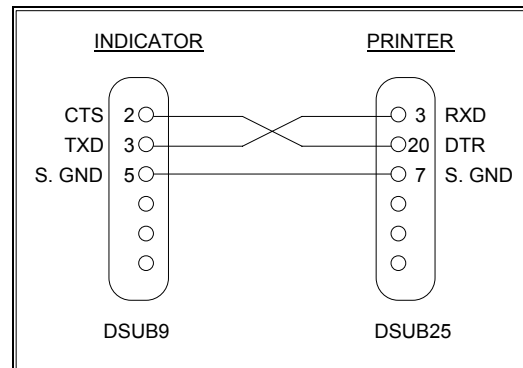
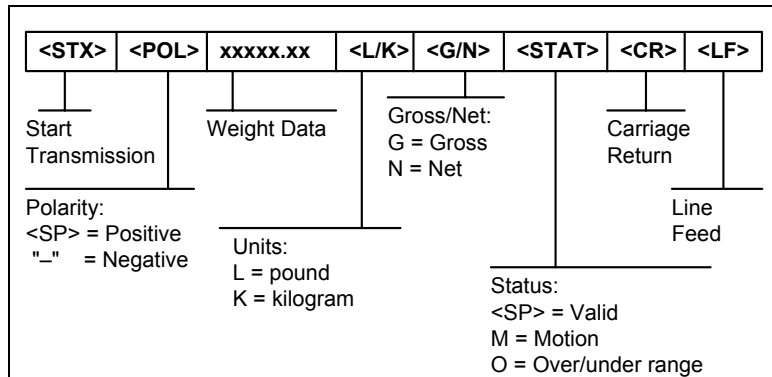


FIGURE B-4. Cable Diagram for Indicator to Printer

### B.1.3 SIMPLEX MODE

The Simplex Mode provides a continuous serial transmission mode and is selected by setting A3 to "C" and A6 to "0". The Continuous mode is used to interface to computers, scoreboards, and other remote devices requiring constant data updating. The transmission occurs at the end of each display update. Figure B-5 shows the serial data format for Continuous Mode.



**FIGURE B-5. Consolidated Controls Continuous Mode**

## APPENDIX C: DETERMINING PROPER SPAN GAIN (F2)

### C.1 SPAN GAIN OVERVIEW

The Span Gain parameter found in F2 of the Setup Menu is directly related to the ADC (Analog to Digital Converter) integration time. This means that the lower the setting, the higher the number of measurements per second. A span gain setting of **25** produces about 25 to 30 measurements per second, while a span gain of **200** produces only about 3 or 4 measurements per second.

There is really no wrong setting for span gain – except in two cases. Using a low setting for a high resolution, low output system could yield instability. Using a high setting in a high output system could yield non-linearity.

### C.2 SETTING THE INITIAL VALUE FOR SPAN GAIN

1. Determine the number of desired external graduations and choose the corresponding value listed in Table C-1 under the number closest to your full-scale input range in millivolts.
2. Enter the Setup Menu and save this number for the Span Gain parameter in F2.
3. Perform a system calibration. If the calibration proves unsuccessful, or you wish to view the internal counts, proceed to the next set of instructions.

### C.3 VIEWING THE INTERNAL COUNTS

1. Enter the zero calibration menu (F16) and follow steps 1 to 3, **but do not save the zero point**.
2. After pressing **ZERO** to zero the offset, place the test weight(s) on the platform. The displayed count is the internal count. If the count remains on zero, check your load cell connections.
3. At full scale, the displayed count should be a minimum of 2 times the desired external graduations. However, for maximum stability, a ratio of 6:1 or higher is recommended.
4. If the displayed count is large enough, remove the test weight(s), re-zero the indicator if necessary, and proceed with the calibration. If the displayed number is *not* large enough, increase the Span Gain to the next highest choice in the Setup Menu and re-calibrate.

# of External Grads	Full Scale Input Range (mV/V)														
	0.2	0.4	0.6	0.8	1.0	1.2	1.4	1.6	1.8	2.0	2.2	2.4	2.6	2.8	3.0
500	25	25	25	25	25	25	25	25	25	25	25	25	25	25	25
1,000	50	25	25	25	25	25	25	25	25	25	25	25	25	25	25
1,500	75	50	25	25	25	25	25	25	25	25	25	25	25	25	25
2,000	100	50	50	25	25	25	25	25	25	25	25	25	25	25	25
2,500	150	75	50	50	25	25	25	25	25	25	25	25	25	25	25
3,000	150	75	50	50	50	25	25	25	25	25	25	25	25	25	25
4,000	200	100	75	50	50	50	50	25	25	25	25	25	25	25	25
5,000	–	150	100	75	50	50	50	50	50	25	25	25	25	25	25
6,000	–	150	100	75	75	50	50	50	50	25	25	25	25	25	25
8,000	–	200	150	100	75	75	75	50	50	50	50	50	50	50	25
<b>10,000</b>	<b>–</b>	<b>–</b>	<b>200</b>	<b>150</b>	<b>100</b>	<b>100</b>	<b>75</b>	<b>75</b>	<b>75</b>	<b>50</b>	<b>50</b>	<b>50</b>	<b>50</b>	<b>50</b>	<b>50</b>
12,000	–	–	200	150	150	100	100	75	75	75	50	50	50	50	50
15,000	–	–	–	200	150	150	100	100	100	75	75	75	75	50	50
20,000	–	–	–	–	200	200	150	150	150	100	100	100	75	75	75
30,000	–	–	–	–	–	–	200	200	200	150	150	150	150	100	100
40,000	–	–	–	–	–	–	–	–	–	200	–	–	150	150	–

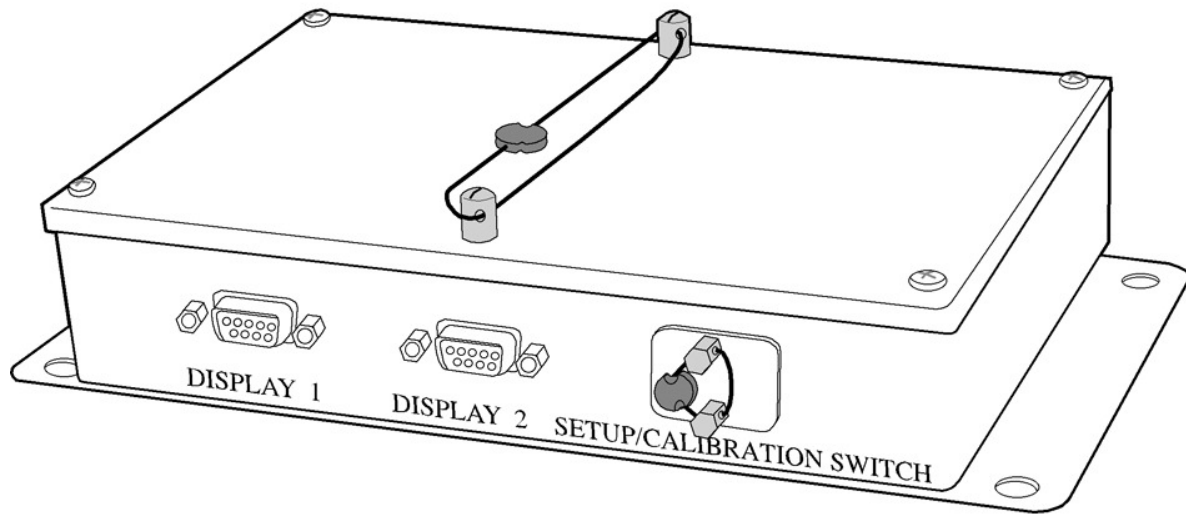
**Table C-1: Minimum Recommended (6:1) Span Gain Table**

**APPENDIX D: DISPLAYED ERROR CODES**

CODE	MODE	MEANING / POSSIBLE SOLUTION
□□□□□□	Normal Operating Mode	Gross Overload. A weight greater than the rated capacity has been applied to the scale. Remove the weight from the platter or try re-calibrating the scale. Otherwise, check for a bad load cell connection or possible load cell damage due to overloading.
Err 0	Span Calibration Mode (F17)	Keyed-in weight value is larger than full scale capacity. Use a smaller test weight or check keyed-in value.
Err 1	Span Calibration Mode (F17)	Keyed-in weight value is less than 1% of full scale capacity. Use a larger test weight or check keyed-in value.
Err 2	Span Calibration Mode (F17)	There is not enough load cell signal to produce the internal counts necessary to properly calibrate the scale. First check all load connections. Use F16 mode to view internal counts. See Appendix C for more information.
Err 3	All Modes	Non-volatile memory read error. One or more setup parameters have been lost.
Err 4	All Modes	Non-volatile memory write error. Indicator needs service.
Err 5	Key-in Span Calibration Mode (F20)	You have attempted to enter a zero value for C1. Enter a known calibration value greater than zero.
Err 7	Initialization	No reading from the ADC. Make sure there is a load cell(s) connected to the indicator at start-up.
Err 9	Normal Operating Mode	Span calibration value has been lost. Re-calibrate the scale.

## APPENDIX E: SEALING THE CONTROL MODULE

The Model 600E requires two wire security seals. Calibration and configuration parameters are accessed by toggling an internal switch which allows access to the calibration mode. This switch is covered with a plate which is secured with two sealing screws. A second security seal is required through the sealing screws which secure the top cover, this prevents the disassembly of the case. This device will not return to normal weighing mode unless the calibration switch is taken out of its calibration position.



**FIGURE E-1: Control Module Sealing**

# **TRINER SCALE & MFG. CO.**

## **LIMITED WARRANTY**

*What is Covered:* Triner Scale & Mfg. Co. Inc. warrants to the first end user customer of the Triner Scale product enclosed with this limited warranty statement that the product, if purchased and used in the United States, conforms to the manufacturer's specifications and will be free from defects in workmanship and materials for a period of one (1) year from the date of original purchase.

*What Triner Scale Will Do to Correct Problems:* Should your Triner Scale product prove defective during the warranty period, please call Triner Scale at (800) 238-0152 for warranty repair instructions and return authorization. Triner Scale will, at its option, repair or replace on an exchange basis the defective unit as follows:

### **PARTS**

New or comparable rebuilt parts in exchange for defective parts for one (1) year after original purchase.

### **LABOR**

Carry-In or mail in service for 90 days from the date of original purchase. Labor and shipping cost after the 90 day period will be charged to you.

If you are authorized by Triner Scale to ship the product to Triner Scale for repair, it is your responsibility to securely package the product in its original container or an equivalent and provide proof of the date of original purchase. You will be responsible for shipping costs to Triner Scale repair facility. When warranty service involves the exchange of the product or a part, the exchanged product may be new or previously repaired to the Triner Scale standard of quality. Exchange or replacement products or parts assume the remaining warranty period of the product covered by this limited warranty.

*What this Warranty Does Not Cover:* This warranty covers only consumer use in the United States. Triner Scale is not responsible for warranty service should the Triner Scale label or logo or the serial number be removed or the product fail to be properly maintained or fail to function properly as a result of misuse, abuse, improper installation, neglect, improper shipping, damage caused by disasters such as fire, flood, and lightning, improper electrical current, interaction with non-Triner Scale products, or service other than a Triner Scale Authorized Service. Packaging and shipping costs incurred in presenting your Triner Scale product for warranty service are your responsibility. If a claimed defect cannot be identified or reproduced in service, you will be held responsible for costs incurred.

THE WARRANTY AND REMEDY PROVIDED ABOVE ARE EXCLUSIVE AND IN LIEU OF ALL OTHER EXPRESS OR IMPLIED WARRANTIES INCLUDING, BUT NOT LIMITED TO, THE IMPLIED WARRANTIES OF MERCHANTABILITY OR FITNESS FOR A PARTICULAR PURPOSE. SOME LAWS DO NOT ALLOW THE EXCLUSION OF IMPLIED WARRANTIES. IF THESE LAWS APPLY, THEN ALL EXPRESS AND IMPLIED WARRANTIES ARE LIMITED TO THE WARRANTY PERIOD IDENTIFIED ABOVE. UNLESS STATED HEREIN, ANY STATEMENTS OR REPRESENTATIONS MADE BY ANY OTHER PERSON OR FIRM ARE VOID. EXPECT AS PROVIDED IN THIS WRITTEN WARRANTY, NEITHER TRINER SCALE & MFG. CO. INC. NOR ITS AFFILIATES SHALL BE LIABLE FOR ANY LOSS, INCONVENIENCE, OR DAMAGE, INCLUDING DIRECT, SPECIAL, INCIDENTAL OR CONSEQUENTIAL DAMAGES, RESULTING FROM THE USE OR INABILITY TO USE THE TRINER SCALE PRODUCT, WHETHER RESULTING FROM BREACH OF WARRANTY OR ANY OTHER LEGAL THEORY.

No terms, condition, understanding, or agreements, purporting to modify the terms of this warranty shall have any legal effect unless made in writing and signed by a corporate officer of the seller. This warranty gives you specific legal rights, and you may have other rights which vary from jurisdiction to jurisdiction.

### **TRINER SCALE & MANUFACTURING COMPANY INC.**

8411 Hacks Cross Road  
Olive Branch, MS 38654-4010  
Tel (662) 890-2385 • Fax (662) 890-2386